

The logo features the word "flow" in a white, lowercase, rounded sans-serif font. It is centered within a large, bright blue circle. The background of the entire image is a gradient transitioning from a deep magenta on the left to a dark purple on the right.

flow

Energy redesigned

energy innovation



Heat & power

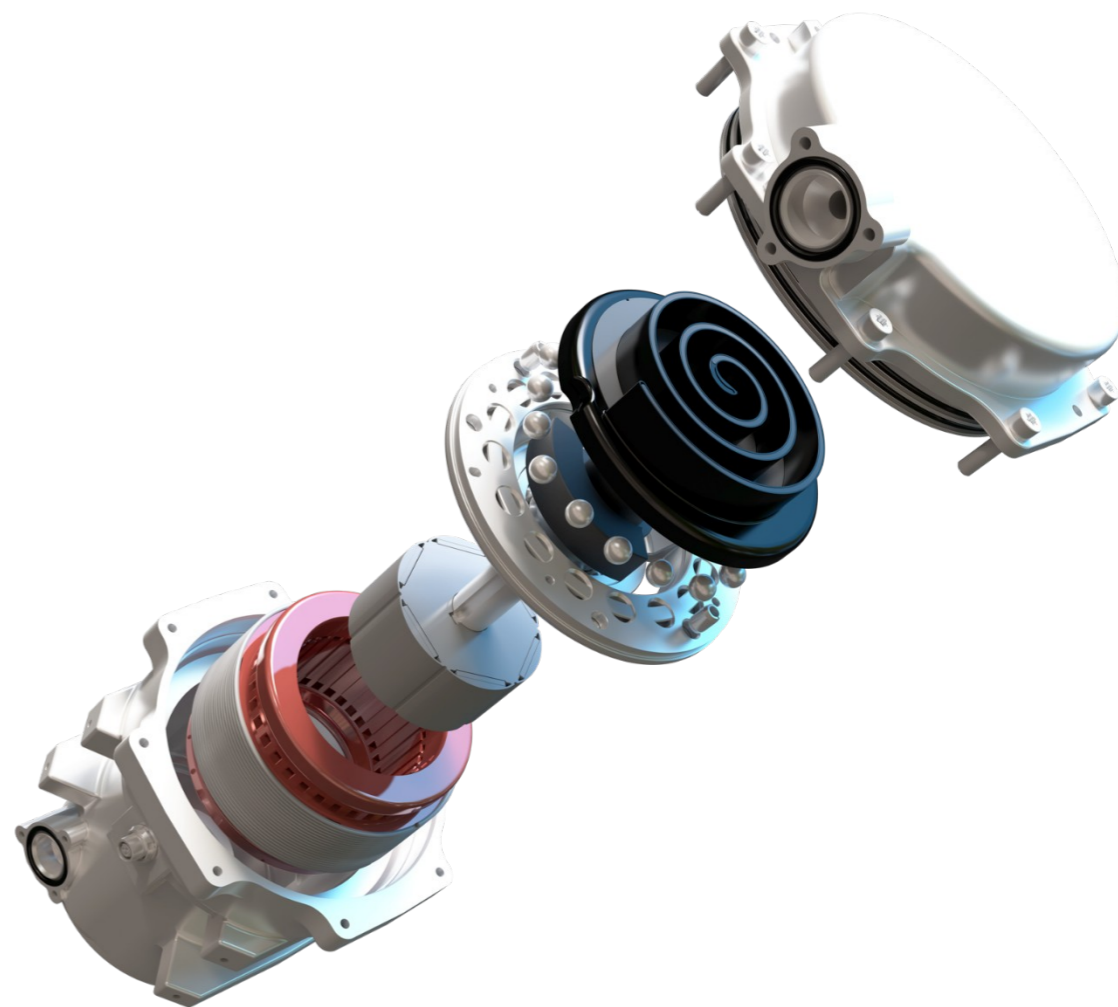


Energy



Home





Gas boilers that produce electricity as well as heating and hot water could grab a third of the European market

1.6m
UK installs
annually

Size of
European
boiler market
115m
installed
units



£3675



1m installs globally



Launched
4th
January
2016

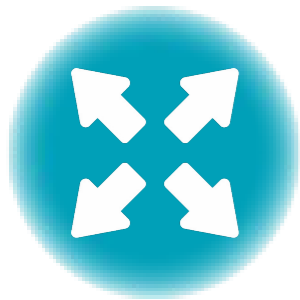






Home
energy is
now an
exciting
market





Launches
Q1 2016





